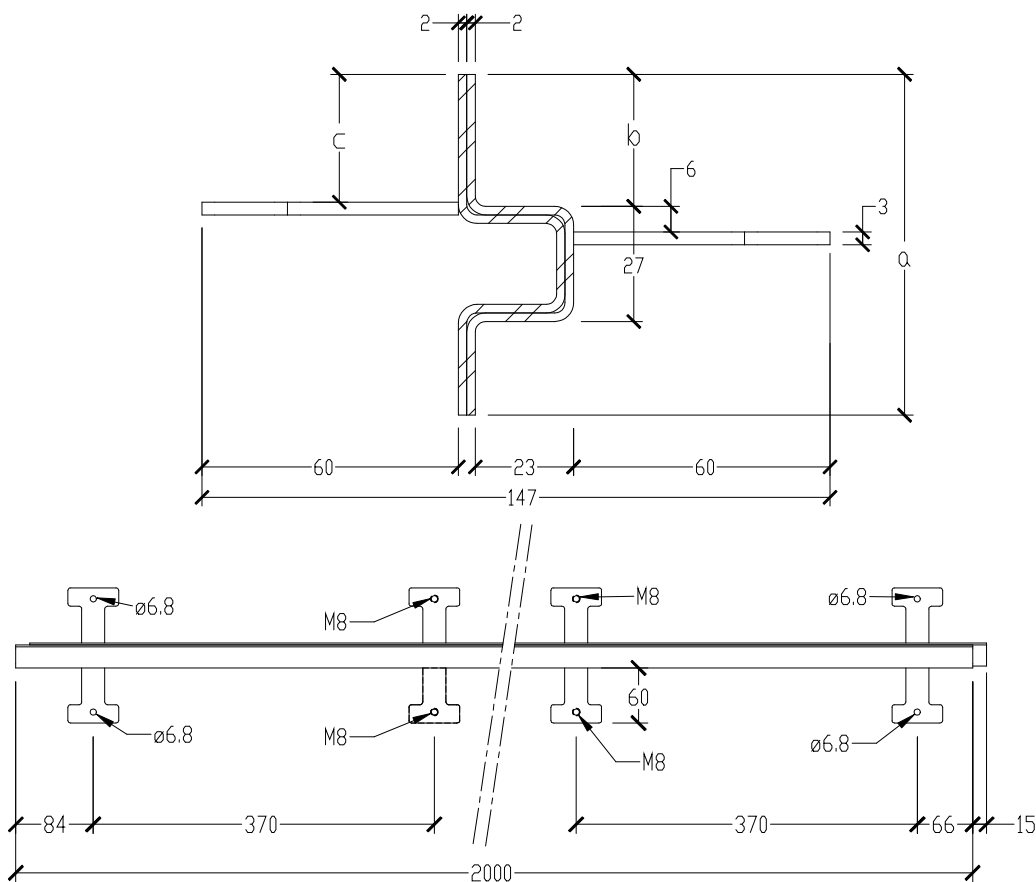


HC-Mini Omega 2 mm



| | |
|--------------------|---|
| STEEL QUALITY | EN 10025 - S235, cold drawn |
| MATERIAL THICKNESS | 2 x 2 mm |
| PROFILE LENGTH | 2,60 m (+ 5 mm /- 10 mm) |
| JOINT OPPENING | up to 10 mm |
| ANCHORAGE STUDS | 3 mm flat, T-shaped plate for connecting of anchorage bolts, distance 370 mm, holes of 6,8mm for screws/bolts, 4 T-anchors equipped with M8 thread for levelling. |
| VERSIONS | Magnelis® (coating) / stainless / aluminium Optional with +/- 5 mm pre-opening and foam sealing strip type BG1 4-15 x 15 mm, top & bottom |

| Height a [mm] | Slab thickness [mm] | b [mm] | C [mm] | Weight (steel) [kg/m] | Weight (steel) [kg/pc] | Pcs/palet [pcs] | m/palet [m] | Weight (steel) [kg/palet] |
|---------------|---------------------|--------|--------|-----------------------|------------------------|-----------------|-------------|---------------------------|
| 60 | 70-80 | 21 | 18 | 3,37 | 8,76 | 126 | 327,6 | 1160 |
| 80 | 90-100 | 31 | 28 | 4,03 | 10,48 | 98 | 254,8 | 1080 |
| 100 | 110-120 | 41 | 38 | 4,65 | 12,09 | 77 | 200,2 | 985 |



Document issued March 2023, Hengelhoef Concrete Joints nv. reserves the right to alter the products without notice.
©COPYRIGHT 2023 by Hengelhoef Concrete Joints nv.



HENGELHOEF
CONCRETE JOINTS

Hengelhoefstraat 158 Zone 1B, B-3600 Genk
T. +32(0)89 32 39 80 • F. +32(0)89 32 39 88
E. Info@hcjoints.be

www.hcjoints.be