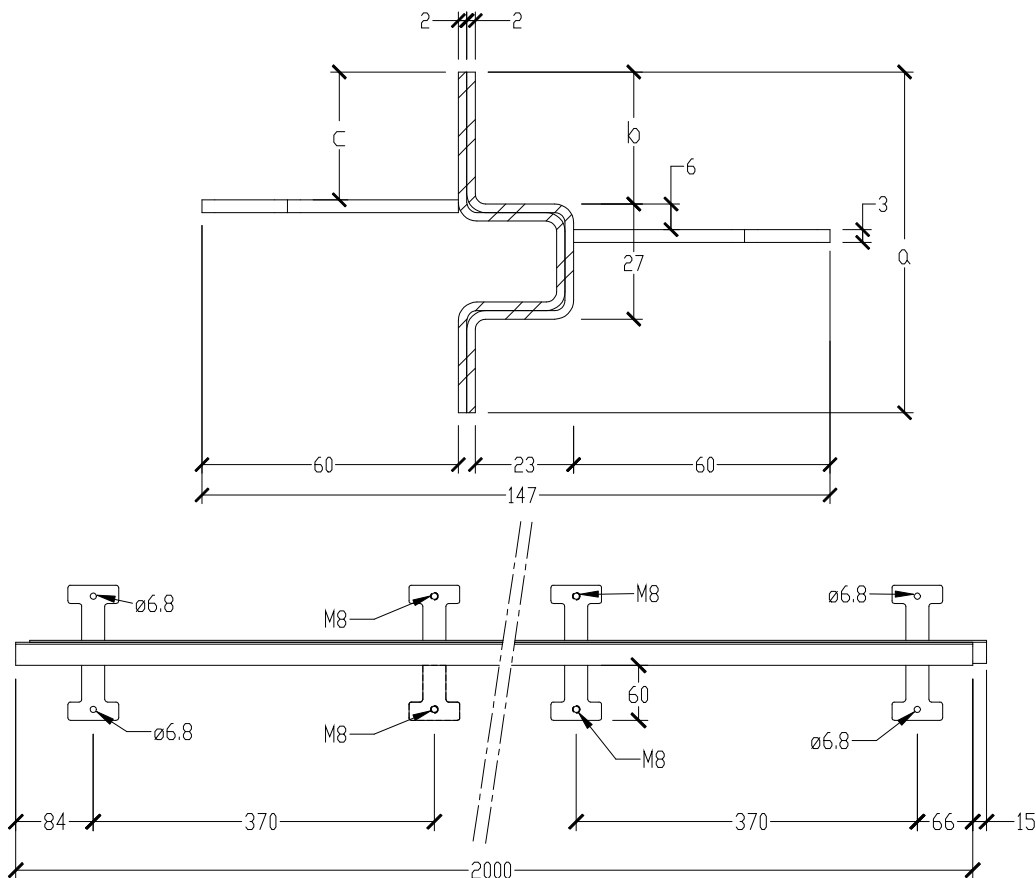


# HC-Mini Omega 2 mm



STEEL QUALITY	EN 10025 - S235, cold drawn
MATERIAL THICKNESS	2 x 2 mm
PROFILE LENGTH	2,00 m (+ 5 mm /- 10 mm)
JOINT OPENNING	up to 10 mm
ANCHORAGE STUDS	3 mm flat, t-formed plate for connecting of anchorage bolts, distance 370 mm, holes of 6,8mm for screws/bolts, 4 T-anchors equipped with M8 thread for levelling.
VERSIONS	Black steel / galvanized / stainless / aluminium Optional with +/- 5 mm pre-opening and foam sealing strip type BG1 4-15 x 15 mm, top & bottom

Height a [mm]	Slab thickness [mm]	b [mm]	C [mm]	Weight (steel) [kg/m]	Weight (steel) [kg/pc]	Pcs/palet [pcs]	m/palet [m]	Weight (steel) [kg/palet]
60	70-80	21	18	3,37	6,75	126	252	850
80	90-100	31	28	4,03	8,06	98	196	790
90	100-110	36	33	4,27	8,55	84	168	718
100	110-120	41	38	4,65	9,30	77	154	716



Document issued September 2019, Hengelhoeef Concrete Joints nv. reserves the right to alter the products without notice.  
©COPYRIGHT 2019 by Hengelhoeef Concrete Joints nv.



**HENGELHOEF**  
**CONCRETE JOINTS**

Hengelhoeefstraat 158 Zone 1B, B-3600 Genk  
T. +32(0)89 32 39 80 • F. +32(0)89 32 39 88  
E. Info@hcjoints.be

[www.hcjoints.be](http://www.hcjoints.be)