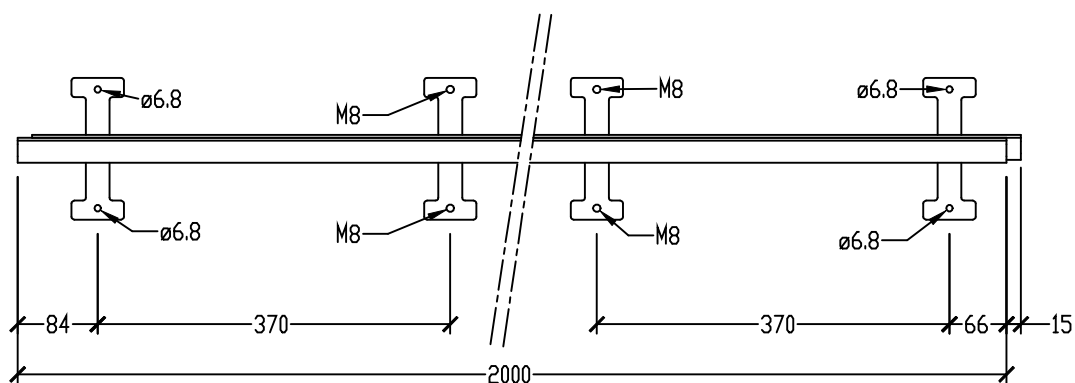
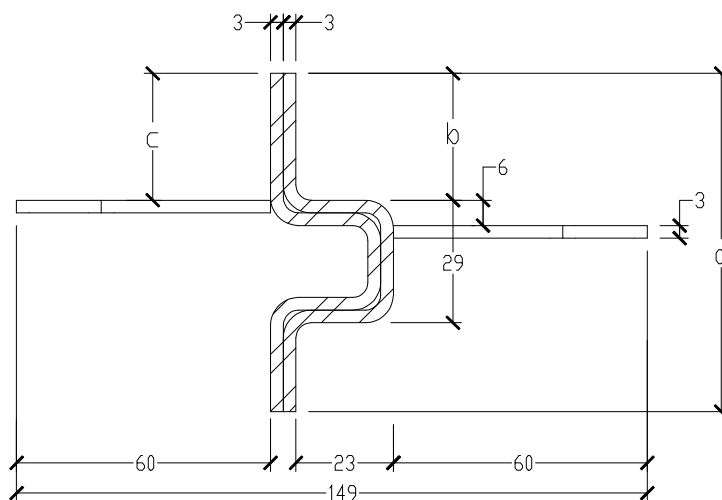


# HC-Mini Omega 3 mm



STEEL QUALITY	EN 10025 - S235, cold drawn
MATERIAL THICKNESS	2 x 3 mm
PROFILE LENGTH	2,00 m (+ 5 mm /- 10 mm)
JOINT OPENNING	up to 10 mm
ANCHORAGE	3 mm flat, t-formed plate for connecting of anchorage bolts, distance 370 mm, holes of 6,8mm for screws/bolts, 4 T-anchors equipped with M8 thread for levelling.
VERSIONS	Black steel / galvanized / stainless / aluminium Optional with +/- 5 mm pre-opening and foam sealing strip type BG1 4-15 x 15 mm, top & bottom

Height a [mm]	Slab thickness [mm]	b [mm]	C [mm]	Weight (steel) [kg/m]	Weight (steel) [kg/pc]	Pcs/palet [pcs]	m/palet [m]	Weight (steel) [kg/palet]
80	90-100	34	28	5,76	11,52	98	196	1129
90	100-110	35	33	6,23	12,46	84	168	1047
100	110-120	40	38	6,70	13,39	77	154	1031



Document issued September 2019, Hengelhoef Concrete Joints nv. reserves the right to alter the products without notice.  
©COPYRIGHT 2019 by Hengelhoef Concrete Joints nv.



**HENGELHOEF**  
**CONCRETE JOINTS**

Hengelhoefstraat 158 Zone 1B, B-3600 Genk  
T. +32(0)89 32 39 80 • F. +32(0)89 32 39 88  
E. info@hcjoints.be

[www.hcjoints.be](http://www.hcjoints.be)