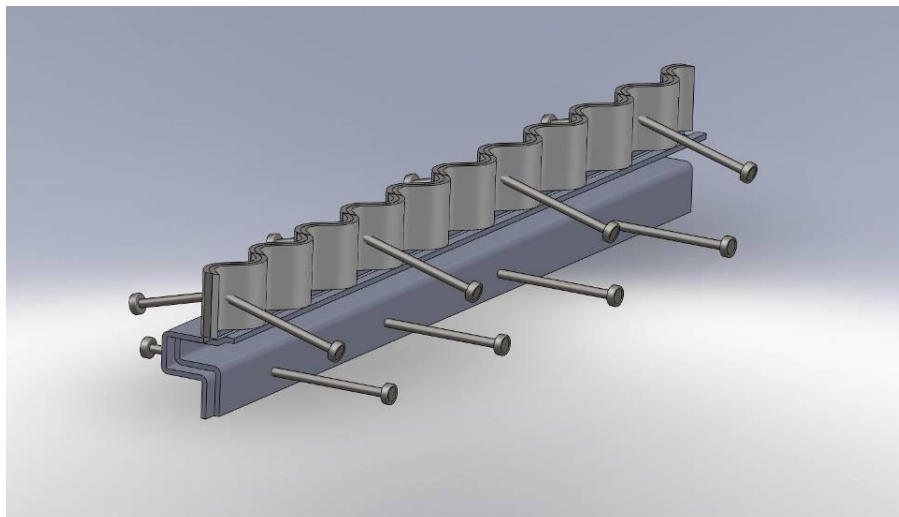




nv. HENGELHOEF CONCRETE JOINTS

### Specification HC-Omega Sinus Slide® expansion joint

..... m Delivery and installation of the proven cold roll formed HC-Omega Sinus Slide® expansion joint to realize a 100% joint free industrial floor in users experience and operation.  
By correct deployment and finishing this joint ensures continuous support of passing wheels which enables shock- and vibration free crossings and creates smooth and noiseless load transfers. Herewith this joint is compliant with the European directive 2002/44/EC concerning exposures of workers to whole body vibrations.



The HC-Omega Sinus Slide® construction and expansion joint has a body which is made of two continuous cold-rolled profiles in 5 mm thick SJ235JRG2 steel.

These profiles fit together tightly due to their clever, standardised form. For anchoring into concrete, these profiles are provided with  $\varnothing 10$  mm, 125 mm long anchor bolts that are automatically welded on every 200 mm top and bottom using resistance butt welding.

On top of the body is welded a double sinusoidal milled steel plate of 5 mm in quality SJ235JRG2. The Stich between the waves is maximum 81 mm. Each stich consist of 2 half waves with a radius of respectively 15 and 20 mm. The shape of the waves is made in such a way that the joint ensures continuous support of passing wheels regardless of the direction, size and form of the wheel, from the placement of the joint to its maximum opening of 20

mm. Due to the upper Sinusoidal steel plate the concrete also becomes the same Sinusoidal shape which guarantees the sliding capacity.

The profiles are connected together using wing bolts with plastic nuts that do not need to be removed after being put in place.

The profile is made in standard lengths of 3 m and is available in heights from 120 to 300 mm. We provide custom solutions above 300 mm.

Complete or part versions in stainless or galvanized steel is possible

### Accessories

Intersections in L, T or X-form

- ..... Pc L-connection for HC-Omega Sinus Slide®
- ..... St T-connection for HC-Omega Sinus Slide®
- ..... St X-connection for HC-Omega Sinus Slide®